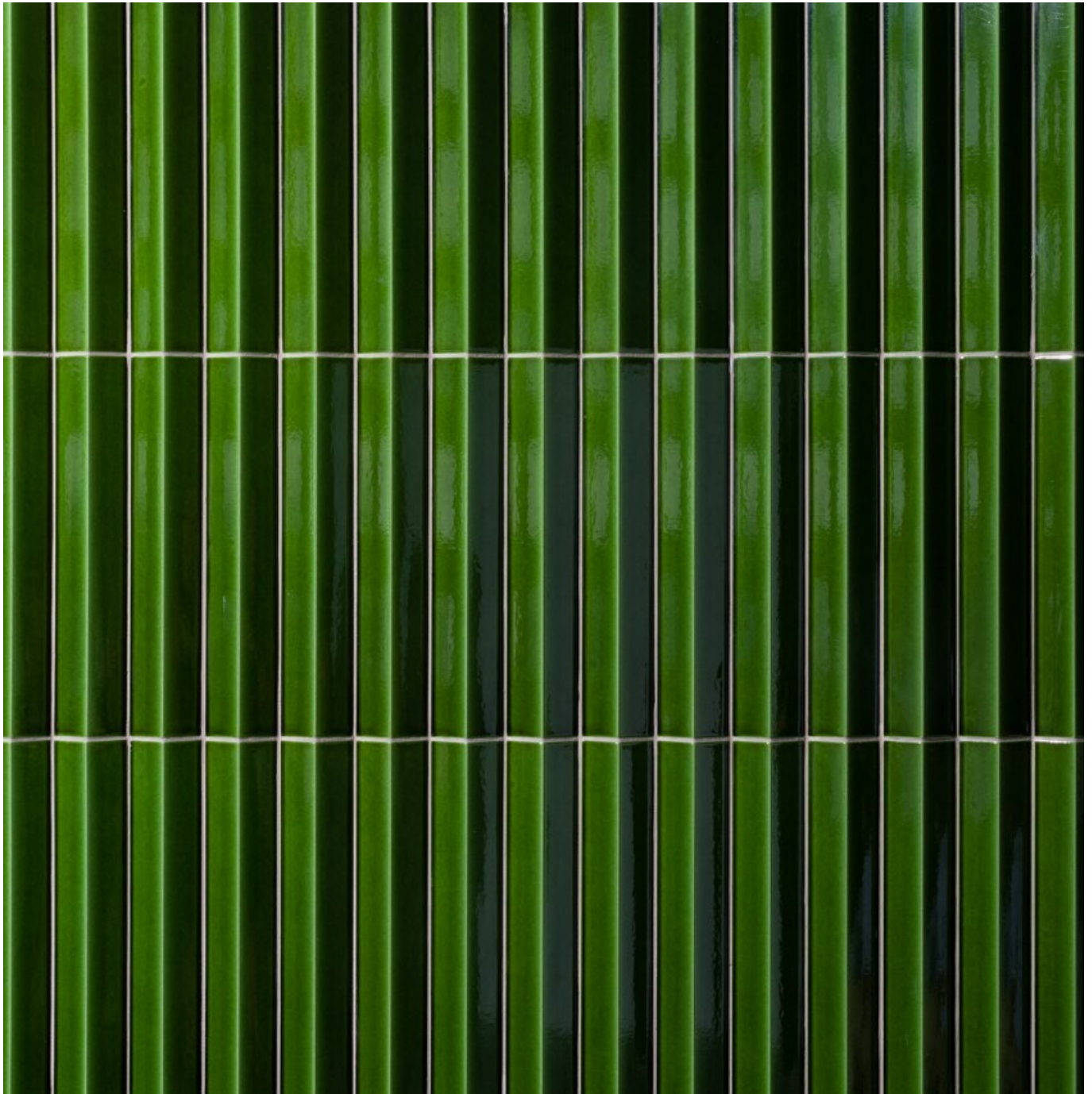


# Mutina

## Rombini

by Ronan & Erwan Bouroullec



EN

Losange  
Triangle

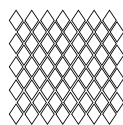
General information  
Laying and maintenance tips  
Colors  
Technical features  
Packing



# General information

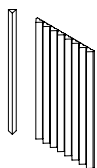
collection	Rombini
design	Ronan & Erwan Bouroullec, 2015, 2021
production	Industrial + Artisanal
material	LOSANGE: double charge porcelain. TRIANGLE: glazed pressed body.
thickness	TRIANGLE EXTRA SMALL: 16 mm TRIANGLE SMALL, TRIANGLE LARGE: 22 mm LOSANGE: 4,7 mm
nominal sizes	TRIANGLE EXTRA SMALL: 8 pcs 31,5-2-1,6 (12"-1"-0,6"), on net 18x31,5 (7"-12") TRIANGLE SMALL: 5 pcs 31,5-3,5-2,2 cm (12"-1"-1"), on net 18,6-31,5 cm (7"-12") TRIANGLE LARGE: 3 pcs 31,5-6-2,2 cm (12"-2"-1"), on net 18,6-31,5 cm (7"-12") LOSANGE: 27,5-25,7 cm (11"-10")
specification	<p>LOSANGE:</p> <ul style="list-style-type: none"> <li>- 4 base color Grey, Blue, Green and Red</li> <li>- 4 tone sur tone grout</li> <li>- 1 base color White</li> </ul> <p>With Losange, the shape of the rhombus becomes bigger and turns into a chip of a mosaic. Made of double charge porcelain stoneware, each piece is installed on 27,5x25,7 cm sheets. The chromatic range results to be deep and intense, thanks to the matt surface which gives a natural character to the product. Even in this case the element is available in two versions, through the usage of matching or with contrasting grout, for a stronger vibration.</p> <p>TRIANGLE:</p> <ul style="list-style-type: none"> <li>- 3 shapes: Extra Small, Small and Large</li> <li>- 5 Matt colors: White, Grey, Red, Green, Blue</li> <li>- 3 Glossy colors: Blanc, Gris, Rose</li> <li>- 2 Glossy colors with craquelé glaze: Vert and Brun</li> </ul> <p>With Triangle, the shape of the rhombus is interpreted in its three-dimensional shape, in order to create games of lights and shadow on the surface: the elements, realized in Large, Small and Extra Small versions, seem to arise from the floor and to carry on the wall covering. Triangle is obtain by press in special 3D mold, then glazed and assembled on net. This allow to use Triangle also on concave or convex curved surfaces.</p>
use	LOSANGE: Floor, wall – indoor, outdoor TRIANGLE: Wall – indoor
complementary pieces	TRIANGLE: Terminal Extra Small, Small and Large in all colors and finishing. Listello in all colors and finishing.
awards	Archiproducts Design Award 2016
patents	Registered design n° 002889055-0019/0024 – date of registration: 03/12/2015
category	Losange UNI EN 14411 App G (BIA group) UGL Triangle BIII UNI EN 14411 GL

LOSANGE



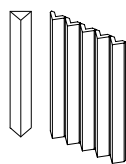
27,5-25,7 cm  
11"-10"

TRANGLE EXTRA SMALL



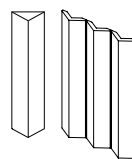
8 pcs 31,5-2-1,6  
12"-1"-0,6"  
on net 18x31,5  
7"-12"

TRANGLE SMALL



5 pcs 31,5-3,5-2,2 cm  
12"-1"-1"  
on net 18,6-31,5 cm  
7"-12"

TRANGLE LARGE



3 pcs 31,5-6-2,2 cm  
12"-2"-1"  
on net 18,6-31,5 cm  
7"-12"

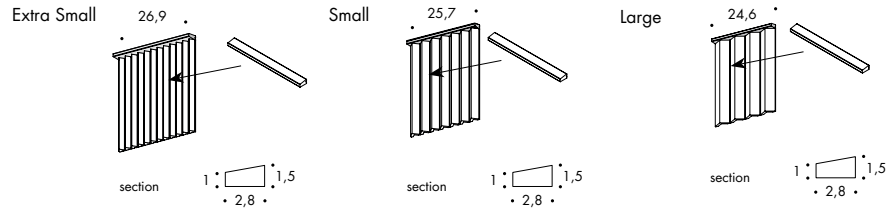
Terminal  
Extra Small/Small/Large

Extra Small:  
26,9 · H 1,5 · 2,8 cm  
11" · H 1" · 2"

Small:  
25,7 · H 1,5 · 2,8 cm  
10" · H 1" · 2"

Large:  
24,6 · H 1,5 · 2,8 cm  
10" · H 1" · 2"

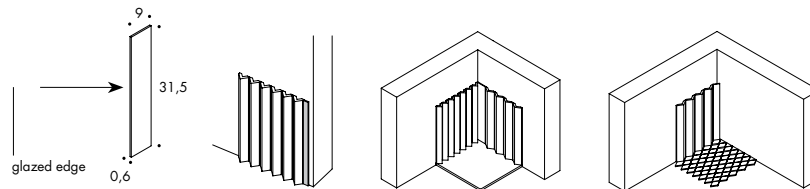
Closing piece available in all colours of the collection.  
1 piece of Terminal Small is modular with 7 pieces of Triangle Small. 1 piece of Terminal Large is modular with 4 pieces of Triangle Large. 1 piece of Terminal Extra Small is modular with 12 pieces of Triangle Extra Small.



Listello di chiusura

9 · 31,5 · 0,6 cm  
4" · 12" · 0,24"

Listello with a glazed edge to be used in the corner as wall closure or as a connector between Triangle (Small, Extra Small and Large) and Losange. Available in all colours of the collection.



## Losange

### Laying and maintenance tips

use	Floor, wall – indoor, outdoor.
installation	Lay on perfectly flat, dry walls
recommended adhesive	NON-RAPID-DRYING adhesive for porcelain stoneware to make it easier to fix the sheets.
recommended joints	Place the sheets with the same joint as within the sheet.
recommended fillers	CEMENT-BASED GROUT: wash thoroughly with clean water. Remove all traces of grout carefully before it dries completely. EPOXY GROUT: wash thoroughly with clean water. Remove all traces of grout carefully before it dries completely.
cleaning at the end of installation	CEMENT-BASED GROUT: Buffered acid (e.g. DETERDEK PRO by FILA, or similar). Wet the floor with water, dilute the product 1:5 with water and pour it on the floor. Wait for 2 or 3 minutes then use a white scotch brite pad and rinse well with clean water. EPOXY GROUT: Alkaline detergent (e.g. FILA CR10 by FILA). FILA CR10: apply pure, wait for 30 minutes then use a green scotch brite pad. SILICONE: Solvent for silicone (e.g. FILA ZERO SIL.). Pour it straight onto the stain, wait for 20 minutes and remove the mark using scotch brite. PAINT: Can usually be removed using water, but if resin-based paints or particular enamels have been used, it is best to ask the manufacturer which solvent is most suitable. RUST: stain remover es. FILA NO RUST. Apply the product onto the stain, leave for 15 minutes, remove the residue and rinse thoroughly.
general cleaning (installed tiles)	You are recommended to use ordinary neutral detergent diluted in water. Avoid using acid or alkaline products, waxes and/or impregnants. During ordinary cleaning it is recommended to use extremely abrasive items (such as scourers and iron or steel sponges) as little as possible. This recommendation must be adhered to rigorously in the case of tiles with a glossy surface finishing as they are more susceptible to the risk of scuffs, scratches and loss of shine, etc. In the event of heavy dirt or particularly textured surfaces, use an alkaline detergent and rinse after washing. For large surfaces, the use of a floor washing machine is recommended. During every-day cleaning procedures, it is necessary to remember that certain types of dirt (dust, sand) increase the abrasive effect of foot-traffic. Therefore we recommend that you avoid bringing in this type of dirt, which comes in from the outside, by placing a door-mat at the entrance.
calibers (real size)	–

## Triangle

### Laying and maintenance tips

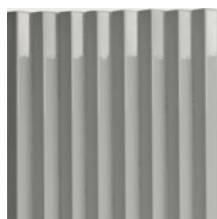
use	Wall – indoor.
installation	Lay on perfectly flat, dry walls.
recommended adhesive	NON-RAPID-DRYING adhesive for porcelain stoneware to make it easier to fix the sheets.
recommended joints	Place the sheets with the same joint as within the sheet.
recommended fillers	FINE-GRAIN CEMENT BASE GROUT: Grout 0.5 m2 at a time and wash thoroughly with clean water. Remove all traces of grout carefully before it dries completely. EPOXY GROUT: Grout 0.5 m2 at a time and wash thoroughly with clean water. Remove all traces of grout carefully before it dries completely. Do not use for Triangle Vert and Triangle Brun.
cleaning at the end of installation	– Triangle Vert and Triangle Brun: do not use abrasive cleaners / do not use acid or alkaline products. / Craquelé is a type of glazed ceramics characterised by micro-cracks on the surface, deliberately created as a distinctive finish. This particular process makes the material sensitive to acids. For ordinary maintenance, anti-limescale products should be avoided, because they can dull the surface.  Please proceed as follows: 1. Treatment pre-grouting with FILA MP90, solvent based stain protector. 2. Grouting with cement-based grout, possibly do not grout in contrast 3. Cleaning at the end of installation with cleaner FILA CLEANER PRO, neutral detergent, dilute the product in a ratio 1:30 4. Final cleaning with FILA MP90  – Triangle Matt and Glossy: do not use abrasive cleaners, especially for glossy finishing. FINE-GRAIN CEMENT BASE GROUT: Buffered acid (e.g. Deterdek by FILA, Deltaplus by KERAKOLL, or similar). Wet the floor with water, dilute the product 1:5 with water and pour it on the floor. Wait for 5 minutes then use a white scotch brite pad and rinse well with clean water. EPOXY GROUT: Alkaline detergent (e.g. Fugasoap by KERAKOLL, PS/87 by FILA). Wet the floor with water, dilute the product 1:5 with water and pour it on the floor. Wait for 5 minutes then use a white scotch brite pad and rinse well with clean water. SILICONE: Solvent for silicone (e.g. Remosil). Pour it straight onto the stain, wait for 1-2 minutes and remove the mark using scotch brite. PAINT: Can usually be removed using water, but if resin-based paints or particular enamels have been used, it is best to ask the manufacturer which solvent is most suitable.
general cleaning (installed tiles)	Triangle Vert and Triangle Brun: do not use abrasive cleaners / do not use acid or alkaline products For ordinary maintenance, anti-limescale products should be avoided, because they can dull the surface. Triangle Matt and Glossy: do not use abrasive cleaners, especially for glossy finishing
calibers (real size)	–

# Rombini Triangle – Glossy Colors

## TRIANGLE EXTRA SMALL



Blanc



Gris



Brun



Vert



Rose

## TRIANGLE SMALL



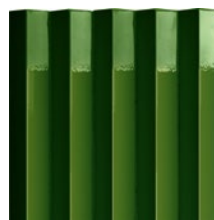
Blanc



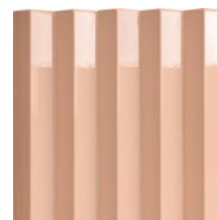
Gris



Brun



Vert



Rose

## TRIANGLE LARGE



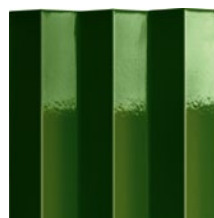
Blanc



Gris



Brun



Vert



Rose

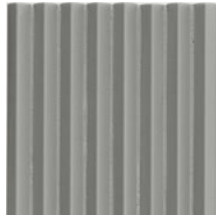
For information about the available grouts, please contact the sales department.

# Rombini Triangle – Matt Colors

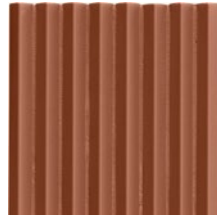
## TRIANGLE EXTRA SMALL



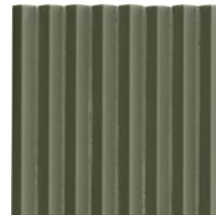
White



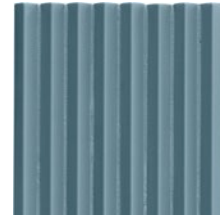
Grey



Red



Green

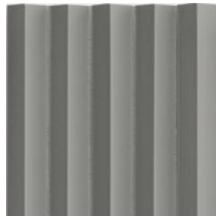


Blue

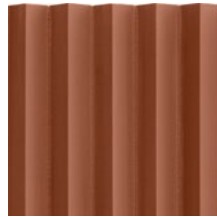
## TRIANGLE SMALL



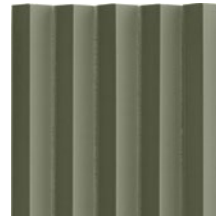
White



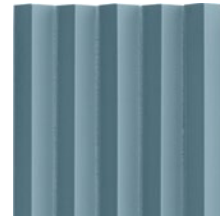
Grey



Red



Green



Blue

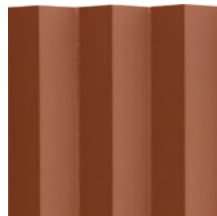
## TRIANGLE LARGE



White



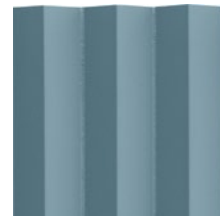
Grey



Red



Green



Blue

For information about the available grouts, please contact the sales department.



## Rombini Losange – Colors



White



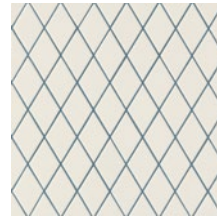
Grey



White



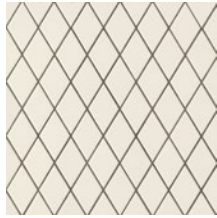
Blue



White



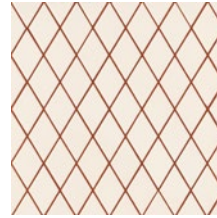
Green



White



Red



White

For information about the available grouts, please contact the sales department.



## Technical features

STANDARD	FEATURES	VALUE REQUIRED	ROMBINI LOSANGE
ISO 10545/3	water absorption	< 0,5%	< 0,5%
ASTM C373		< 0,5%	< 0,5%
ISO 10545/4	breaking strength	Sp<7,5 min 700	in conformity
ISO 10545/6	resistance to deep abrasion	<175 mm <sup>3</sup>	in conformity
ISO 10545/9	resistance to thermal shock	no visible alteration	resistant
ASTM C484		no samples must show visible defects	unaffected
ISO 10545/12	frost resistance	no visible alteration	resistant
ASTM C1026		unaffected	unaffected
ISO 10545/13	resistance to chemical attacks	no visible alteration	resistant
ASTM C650			unaffected
ISO 10545/14	stains resistance	minimum 3	5
DIN 51130-04	slip resistance	medium values 6÷10° R9 10÷19° R10 19÷27° R11 27÷35° R12 > 35° R13	R10
VOC Emission			available upon request
Declaration of Contents			available upon request
EPD			available upon request
SDS			available upon request
BPD3			available upon request
HPD			available upon request

STANDARD	FEATURES	VALUE REQUIRED	ROMBINI TRIANGLE
ISO 10545/3	water absorption	x >10%	17,0%
ISO 10545/9	thermal shock resistance	no alteration	no alteration
ISO 10545/11	crazing resistance	no alteration	no alteration
ISO 10545/13	acids and alkalis resistance	min B	A – B
ISO 10545/14	stains resistance	class 3	class 5
LEED 4.1		–	64% recycled material
VOC Emission			
Declaration of Contents			
SDS			
BPD3			
HPD			

# Packing

SIZE	PCS-SQM	PCS-BOX	SQM-BOX	BOX-PAL	KG-BOX	KG-PAL	SQM-PAL
losange 27,5-25,7 cm	14,00	7	0,50	90	5,00	450	45,00
triangle extra small on net 18-31,5 cm	17,40	11	0,62	63	10,35	652,05	39,06
triangle small on net 18,6-31,5 cm	17	9	0,53	63	10,55	664,65	33,40
triangle large on net 18,6-31,5 cm	17	9	0,53	63	9,45	595,35	33,40
terminal extra small	-	10	2,69 ml		3,25		
terminal small	-	10	2,57 ml	-	3,25	-	-
terminal large	-	10	2,46 ml	-	3,25	-	-
listello 8-31,5-0,6 cm	-	-	-	-	-	-	-