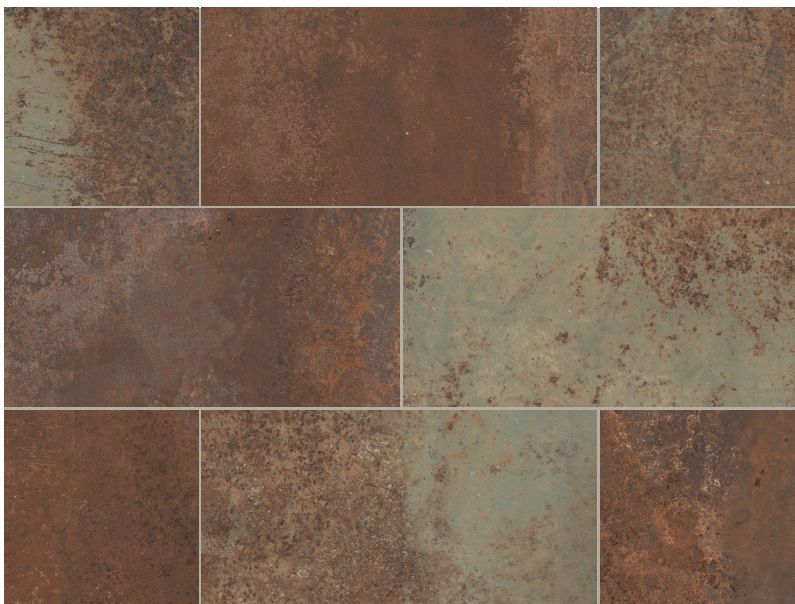


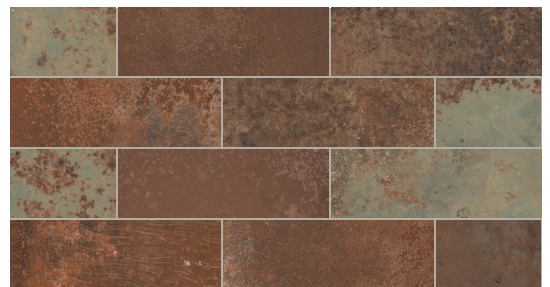
E D I M A X M E L T

Oxidized and corroded metal sheets are the inspiration for this metal-look porcelain. The Oxyd color has a dramatic rust color and marks that come from the iron oxidation process. In contrast to the rust color are areas with a greenish hue that resemble the reflective metal sheet before rusting. Edimax utilized the new 3D inkjet technology which allows them to apply the glazes in a way

that adds tangible structure to the relief, grooves and spots in the graphic. The result is so realistic that it's hard to believe that this is a glazed porcelain material, made without any real metals added to the glaze, with all the technical advantages that entails.



12 x 24 Oxyd (EXMTOD/1224)



4 x 12 Oxyd (EXMTOD/412)

It should be noted that there is a wide range of variation with many different graphics that are mixed and packed randomly. It is important to blend the material well during installation, pulling from multiple cartons and laying out the pieces carefully to get the right blend. We suggest laying out an area before starting installation.

Colors are intended as a guide only and may vary from actual tile. Sizes listed are nominal. Please check samples before making final selection and to get actual dimensions for layout. See reverse side for additional product information.

Product Information

Color

Oxyd EXMTOD

Sizes (Rectified)

12 x 24 EXMTOD/1224

4 x 12 EXMTOD/412

Mosaic

2 x 2 EXMTOD/22



2 x 2 full sheet mosaic

Note: Individual sheets may not show the full range of color and graphics.

Extra care should be taken during installation to blend the material. This may involve cutting up sheets or even removing and relocating individual pieces to get the proper final look.

Trim

The surface bullnose is made from field tile that is cut, ground and reglazed.

3 x 24 Surface Bullnose EXMTOD/SBN



Non-stock sizes - Available for projects that meet minimum quantities

Non-stock prices are subject to change and should be reconfirmed at time of order.

24 x 24 EXMTOD/2424

24 x 48 EXMTOD/2448

Usage

Melt is suitable for residential and light to moderate commercial applications.

Installation

It should be noted that there is a wide range of variation with many different graphics that are mixed and packed randomly. It is important to blend the material well during installation, pulling from multiple cartons and laying out the pieces carefully to get the right blend. We suggest laying out an area before starting installation.

Most Italian manufacturers recommend a maximum offset of 8" (20 cm) on all large format tiles when setting a running bond. Please refer to ANSI requirements for setting large format tiles, ANSI A 108.2 section 4.3.8. Using a leveling system can improve the installation of this product.

Physical Properties

Physical Properties		Value Natural	Physical Properties	Norms	Value Natural
Average Bending Strength	10545-04	45,5 N/mm ² (average value)	PEI	10545-7	IV
Water Absorption	10545-03	≤ 0,05	Slip Resistance	DIN 51130	R9
Frost Resistance	10545-12	Resistant	** Dynamic (DCOF) Coefficient of Friction	ANSI A326.3	Wet ≥ 0.42



** These results are for the natural finish and for the normal productions; if there is concern about a particular production, it should be tested. The Dynamic Coefficient of Friction is a general guide only. Testing may vary with different production runs and with different testing labs.

As noted in the Americans with Disabilities Act (ADA) the coefficient of friction varies considerably due to facts not under the control of entities such as the manufacturers and distributors. These factors include, but are not limited to, contaminants, slope of terrain, drainage conditions, adjacent surfaces, etc. Suitability for any installation can only be determined by a site examination of all conditions that could affect the slip resistance of the tile being installed. Continual cleaning and maintenance must be performed once the tile has been installed.



COLLECTION

MADE IN ITALY

TSEXMT/201029