

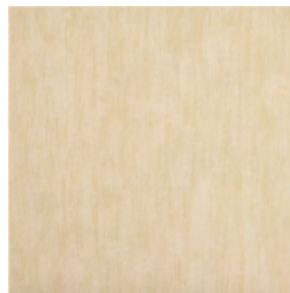
Koshi



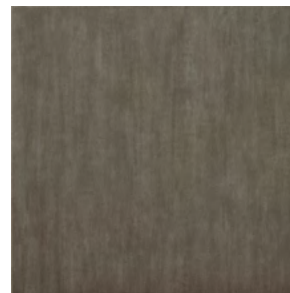
Koshi is a full-body porcelain that offers a modern, fresh look. With an eight-color palette in 12 x 12, 12 x 24, and a four-color palette in 24 x 48, makes Koshi an ideal choice for commercial or residential applications.



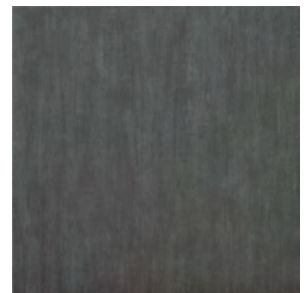
ALMOND



BEIGE



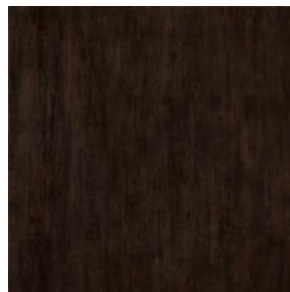
CEMENTE



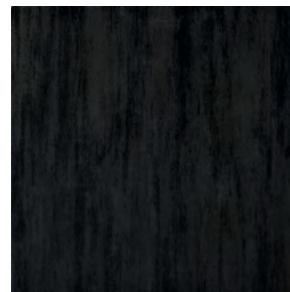
DARK GREY



LIGHT GREY



TOBACCO



NERO



WHITE

Colors are intended as a guide only and may vary from actual tile. Please check tile samples before making final selections. See reverse side for product information.

*Sizes

Non-Rectified

12 x 12 IAKI--/1212 (8.5 mm thick)

12 x 24 IAKI--/1224 (9.2 mm thick)

Rectified (Not modular with 12 x 12 & 12 x 24)

24 x 48 IAKI--/2448 (11mm thick)

Available in **Almond (AD) • Cemente (CE) • Light Grey (LG) • Dark Grey (DG)**

2 x 2 Mosaic IAKI--/22 (Available in all 8 colors)

Modular Mosaic IAKI--/MM

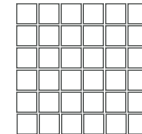
(Available in two subtle blends and one solid color. Select a complementary field color for trim.)



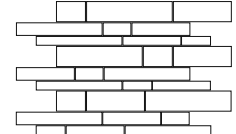
12 X 24



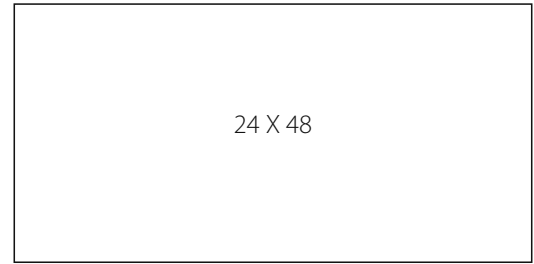
12 X 12



2 X 2 Mosaic



Modular Mosaic



24 X 48

* When installing patterns please note that field sizes and mosaics are different thicknesses. The thickness difference can usually be worked out by the installer.

• We are not able to ship 24 x 48 tile orders the same day as placed due to the special packing required to prepare this large size format. There are special setting requirements and materials for large format tiles. Please refer to the TCNA Handbook and guidelines by your mortar manufacturer for more information.

Colors

IAKIAD Almond

IAKIBE Beige

IAKICE Cemente (Green/Grey)

IAKIDG Dark Grey

IAKILG Light Grey

IAKINO Nero

IAKITO Tobacco (Brown)

IAKIWE White

Trim

IAKI--/SBN 3 x 12 Surface Bullnose

The Surface Bullnose is pressed and glazed to match.

Coordinating Trim

Available in **Almond (AD) • Beige (BE) • Cemente (CE) Light Grey (LG) • White (WE)**

Expect variation in color and size between field and trims.

IAKI--/A112 12" Quarter Round

IAKI--/AC112 Beak

As we transition to cove base we may phase out - check stock.

IAKI--/C112 Finger Cove

Available in all 8 colors.

Expect variation in color and size between field and trims.

IAKI--/CE612 6 x 12 Cove Base

IAKI--/CEC612 Outside Cover Corner

Technical Information

Physical Properties	Norms	Value
Coefficient of Friction (COF)	ASTM C1028	Wet ≥ 0.60 Dry ≥ 0.60
Dynamic Static(DCOF) Coefficient of Friction	ANSI A137.1:2012	≥ 0.42 Wet

The Coefficient of Friction is a general guide only. Testing may vary with different production runs and with different testing labs. As noted in the American with Disabilities Act (ADA) the coefficient of friction varies considerably due to facts not under the control of entities such as the manufacturers and distributors. These factors include, but are not limited to, contaminants, slope of terrain, drainage conditions, adjacent surfaces, etc. Suitability for any installation can only be determined by a site examination of all conditions that could affect the slip resistance of the tile being installed. Continual cleaning and maintenance must be performed once the tile has been installed. For more information see our current handout *Americans with Disabilities Act and Slip Resistance of Tile*.

Modular Mosaic Colors

IAKIADBE/MM Almond & Beige Blend

IAKILGWE/MM Light Grey & White Blend

IAKICE/MM Cemente Blend

49% Recycled Ceramic Content
Pre-consumer



This product contributes towards satisfying MR credits 4.1 & 4.2 under LEED®.



ECO
MANAGEMENT
AUDIT SCHEME



Green Building
Council of Italy

Non-Stock Sizes & Trim

Available in the above colors - subject to minimum order quantities.

18 x 18 IAKI--/1818 (9.5 mm thick)

12 x 24 Rectified IAKI--R/1224 (9.2 mm thick)

24 x 24 Rectified IAKI--R/2424 (10.5 mm thick)

24 x 48 Rectified IAKI--/2448 (11 mm thick)

Available in **4 non-stock colors (4 colors stocked - see above)**

30 x 30 Rectified IAKI--/3030 (11 mm thick)

18 x 36 Rectified IAKI--/1836 (10.5 mm thick)

Available in **Beige (BE) • Cemente (CE) Light Grey (LG) • Dark Grey (DG)**

Trim

IAKI--/SBN418 4 x 18 Surface Bullnose

IAKI--R/SBN424 4 x 24 Surface Bullnose